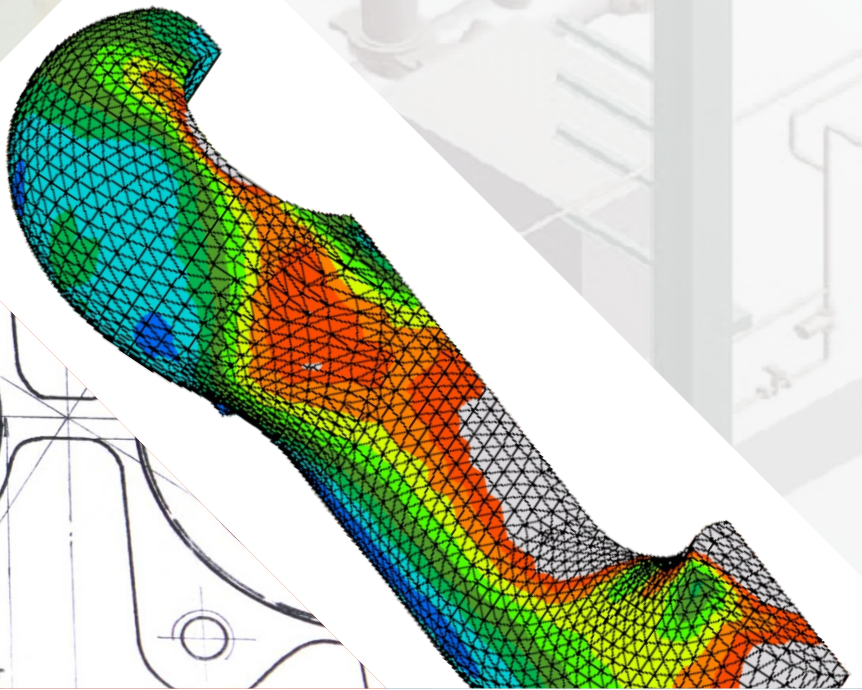
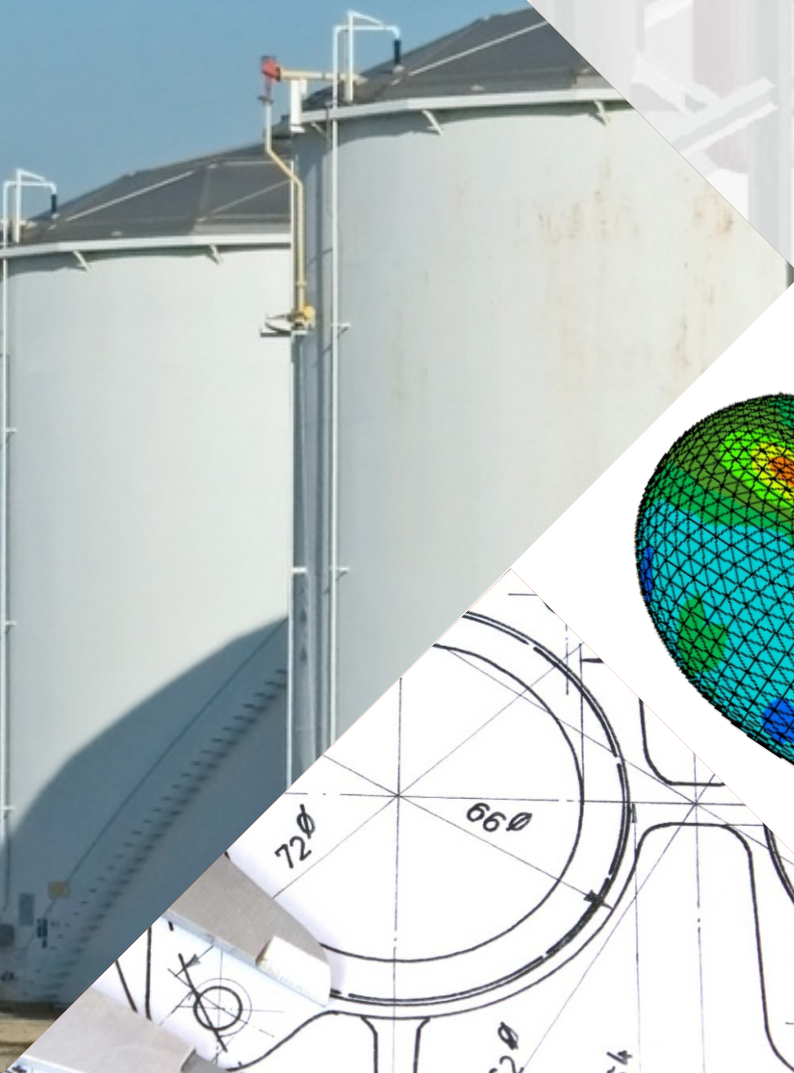




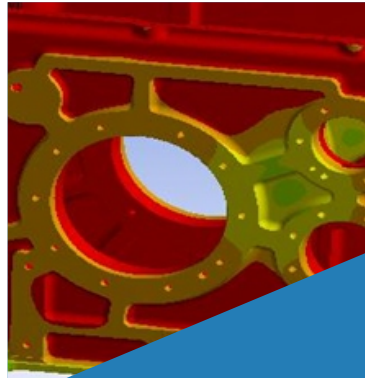
# Engineering Design & Analysis Services



RajMet is a technology driven company that infuses engineering with efficiency. Since 1995, we have been providing a host of value added services to our global clients.

## Oil & Gas

Boilers and Pressure Vessels,  
Pressure Piping Systems,  
Offshore Structures,  
Sub-sea installations,  
Plant Design,  
Process Equipment,  
Oil Storage Tanks & Terminals



## Automotive

BIW, Chassis,  
Interior & Exterior,  
Body Structure & Engines,  
Transmission,  
Exhaust Systems

## General Engineering

Machine Design,  
Material Handling Systems, Conveyors,  
SPM's, Gear trains,  
Plastic Moulds,  
Dies for forgings & Die castings, Jigs, Fixtures & Toolings, etc.



## Aerospace

Interiors,  
Structures,  
Engine and Power train



We remain differentiated on the basis of our technological strengths and strong engineering skills which enables us to engage very closely with our customers on end-to-end engineering projects.

Our Quality Management Systems have been certified to ISO:9001 by Det Norske Veritas (DNV) accredited by the United Kingdom Accreditation Services (UKAS).

Our challenging work environment brings out the best in our people. We offer a professional value system, and extensive opportunities for growth and personal development.

ISO 9001



013

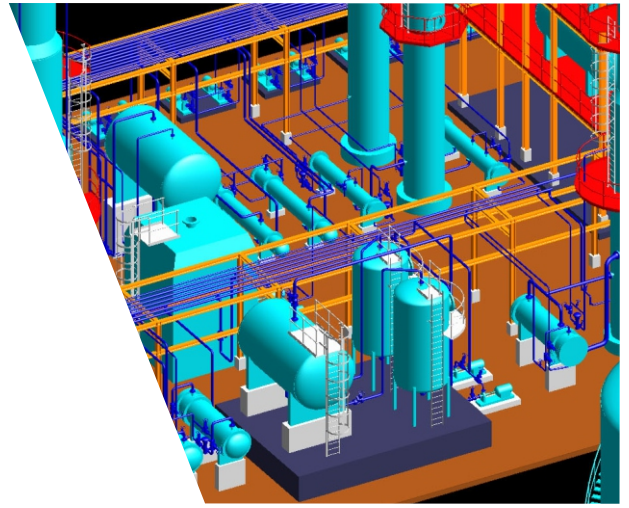
## Our Strengths...

- Rich Domain Knowledge
- Strict Quality and Information Security Standards
- State-of-the-art Infrastructure
- Excellent Project Management Skills



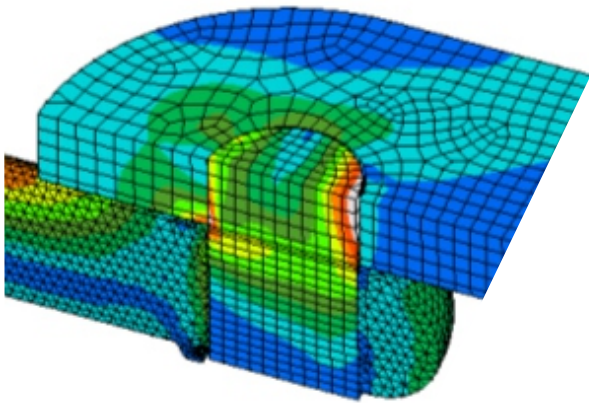
## Engineering Design Services

- Design Drafting & Detailing
- Plant Design
- Piping Layout, Isometrics, Pipe Hangers & Supports
- 3D Modeling & Detailing
- Strength, Pressure, Sizing Calculations
- Material Take Off, Bill of Materials
- Design Optimization, Animation & Visualization
- Reverse Engineering
- Data / Legacy conversion



## Engineering Analysis

- Finite Element Meshing & Analysis (FEM/FEA)
- Piping Stress Analysis
- Dynamic Analysis
- Fatigue Life Calculations
- Computational Fluid Dynamics (CFD)
- Stress, Fluid Flow, Heat Transfer & Thermal Analysis
- Process Modeling & Mechanism Simulation
- Durability Analysis



## Product Lifecycle Management

We offer PLM solutions to manage the entire lifecycle of a product efficiently and cost effectively, from ideation design and manufacture, through service and disposal i.e. art to part

Our PLM solutions establish a cohesive platform to:

- Optimize Relationships Along the Lifecycle and Across Organizations.
- Maximize the Lifetime Value of Your Business' Product Portfolio.
- Set Up a Single System of Record to Support Diverse Data Needs.





# Global Presence



## Onshore & Offshore



**Corporate Head Office**  
RajMet Engineering Private Limited  
Deep Heights, Nagar Road,  
Ramwadi, Pune 411014. India.

**Sales Enquiries:** [sales@rajmet.com](mailto:sales@rajmet.com) | **General Enquiries:** [mail@rajmet.com](mailto:mail@rajmet.com)  
**T:** +91-20-32347667 | [www.rajmet.com](http://www.rajmet.com)

